



https://youtu.be/qs8UJHXdu_o

Simulation study of house mouse invasion processes in Senegal

Project progress

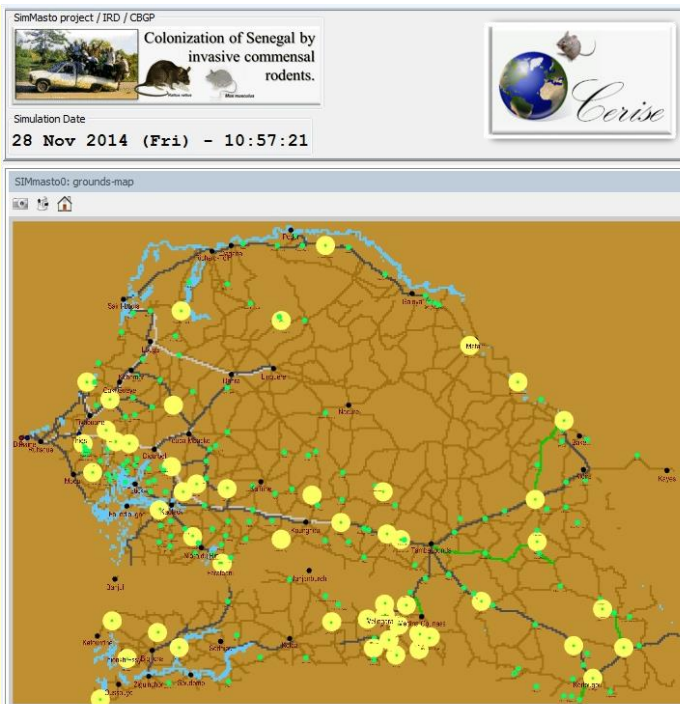
Workshop on Invasive Species
Cotonou Benin, nov. 2018

lefur@ird.fr

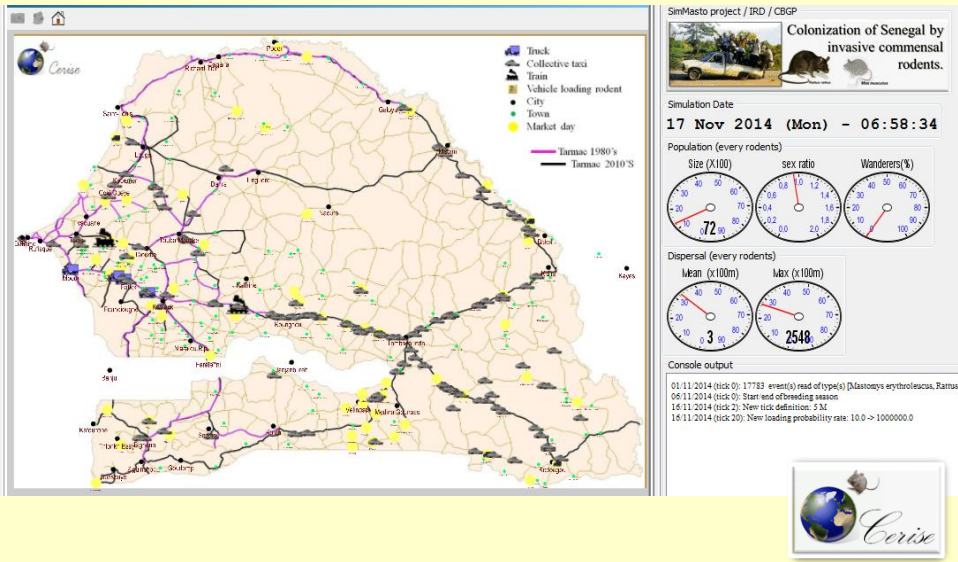
1/7

Manual census
then
simulation of
weekly market
days (*loumos*)
in Senegal

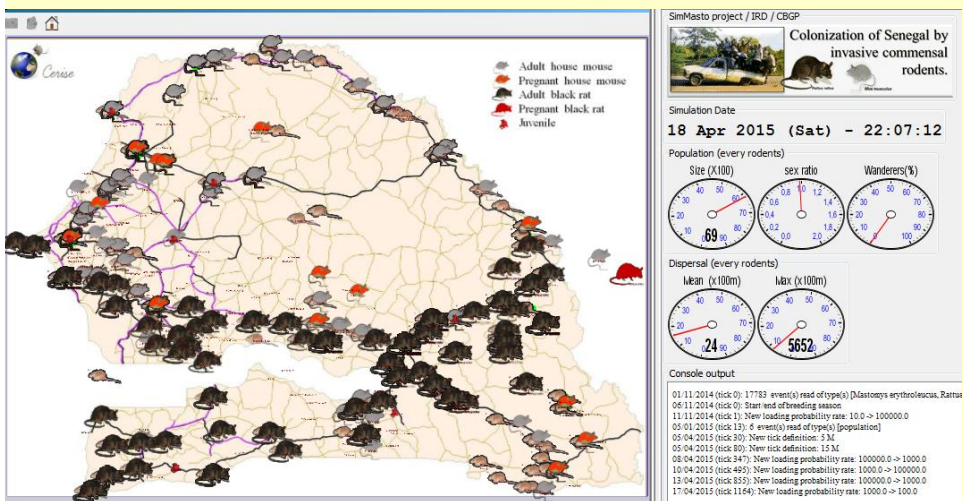
 Market day



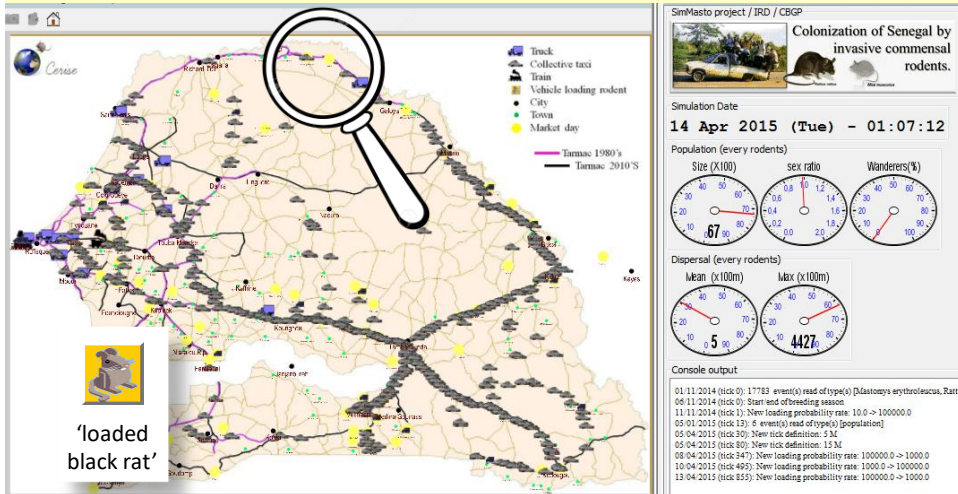
2/7 On this basis, simulation of transport at several timescales



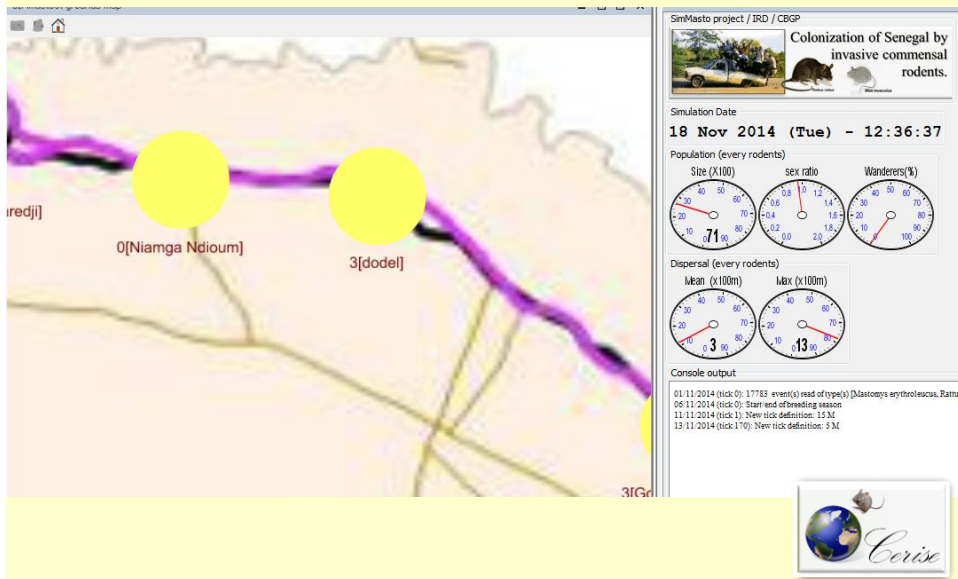
3/7 Simultaneously: demographic simulation of observed (2014) rodent communities



4/7 Research on rodents' loading probability by commercial transport

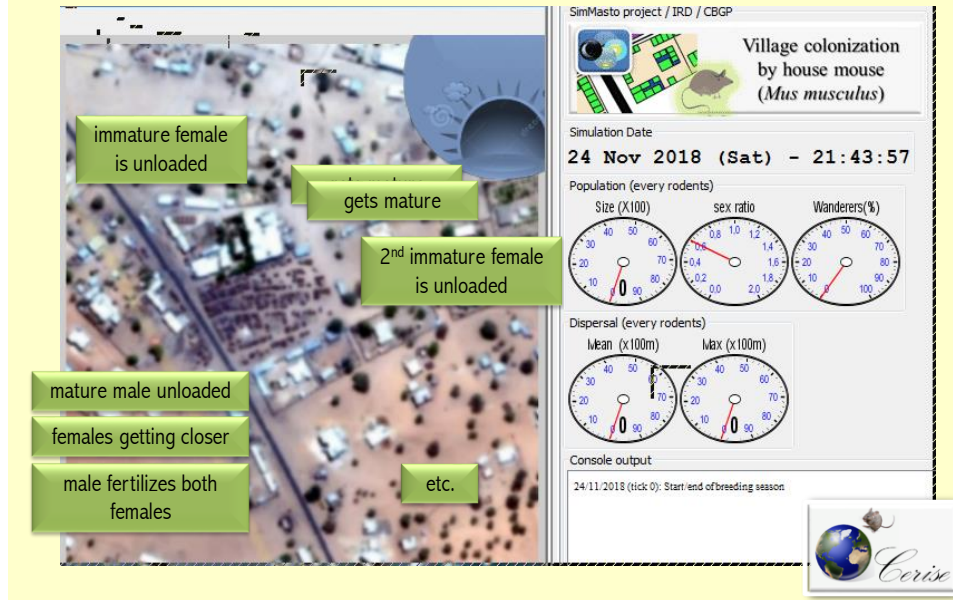


5/7 Usage as input data on Dodel



6/7 Simulation of domestic rodent arrival and settling

(one unload each 3 weeks...)



Perspectives

thank you :)

Doctoral research Moussa Sall / Univ. G.Berger Senegal

